

NAME

ADDRESS

Horace McNeale
Jul Foster

Dr. Kelly Linden
Mrs. Eleanor Shivers
Allan Shivers
Harry Belmont

Just Union
Patricia Beland
Dorothy
Robert
Eugene
Charles Sanders

Anthony's
PIER 4
WINE LIST

WHITES

REDS

SPARKLERS

HALF
BOTTLES
& LARGE
FORMAT
BOTTLES

SWEETS

AFTER
DINNER
DRINKS

NAME

ADDRESS

For Everyone at
Anthony's
Thanks so very much
for your
Joseph
Jim
John
Do Well Stay
Again - a treat to eat!

Richard Chamberlain
(Richard Chamberlain)



photos (top to bottom): Julia Child, Red Skelton,
Joe DiMaggio and Willie Mays, Jack Benny, Elizabeth Taylor,
Edward G. Robinson, Johnny Carson, Danny Kaye and Carl Yastrzemski



ANTHONY ATHANAS

A LEGACY OF FINE FOOD AND WINE

Anthony Athanas, the founder of Anthony's Pier 4 Restaurants, always felt that a broad-based wine program was as important as the cuisine of his restaurants.

Wine has been an essential component of the Anthony's Pier 4 dining experience since Mr. Athanas opened the restaurant in 1963. Extensive tasting of current and future wines for the list is a must with cellaring in mind. Visits and long term relationships with producers from around the world help to maintain and grow our wine list.

Inasmuch as the cuisine of Anthony's Pier 4 features the wonderful seafood of New England, our wine list presents first the white wines, which are most appropriate with this fare, especially White Burgundy and California Chardonnay.

We also offer an extensive selection of California Cabernets and Merlots as well as selections from Bordeaux, Australia, Italy and other parts of the world.

For a special ending to your dinner, you may wish to make a selection of one of the very fine dessert wines or after dinner spirits, which you will find at the back of the list.

Anthony's Pier 4 has received numerous dining and wine list awards and has been a Wine Spectator awardee since 1982.

If you would like some advice in selecting a wine, please do not hesitate to call upon one of our sommeliers, who will be glad to assist you.

*Anthony Athanas Jr, Michael Athanas,
Robert Athanas, and Paul Athanas*

NAME

ADDRESS

DATE

Harry Goeden

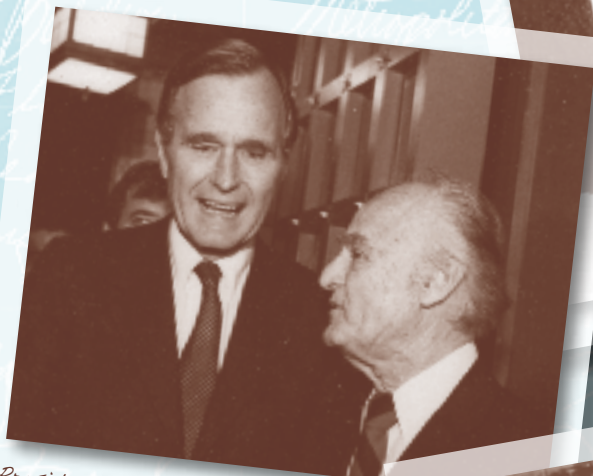
Salem, Oregon
Charlotte, N.C.

John F. Kennedy
Frank G. Gage
Mama

John F. Kennedy
Metropolitan
Metropolitan



President John F. Kennedy



President George H.W. Bush



President Richard Nixon



Ethel and Ted Kennedy with Anthony and Michael Athanas



WALT DISNEY
PRODUCTIONS

7/8/65

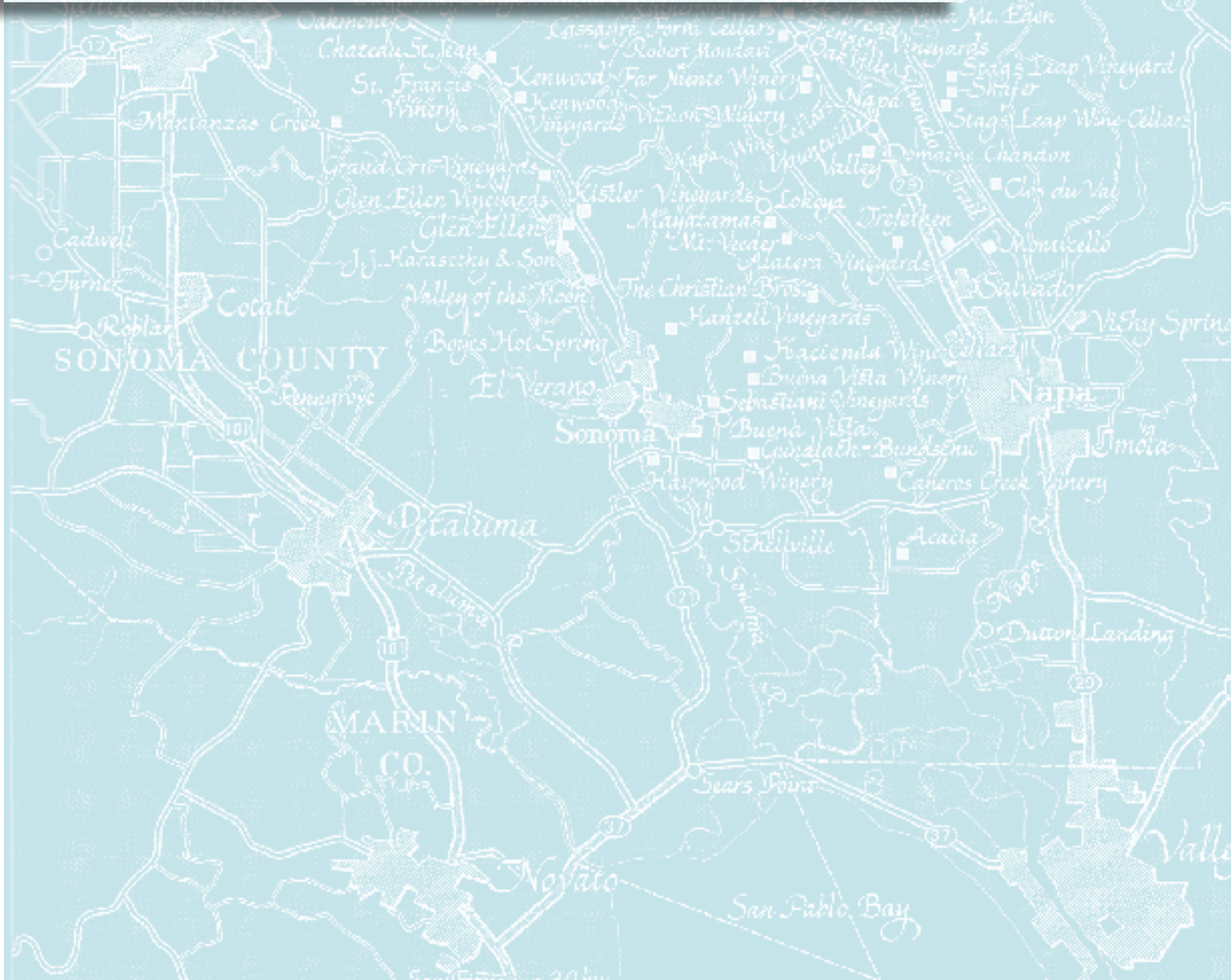
Jackie Baker
Donald Duck
Clarence "Ducky" Nash

Cindy Candido

NAPA AND SOUTHERN SONOMA



Anthony with his sisters, Dorothy and Rose circa 1939



CHARDONNAY

California

344	Beringer Vineyards, "Napa Valley", 2010	34.
332	Beringer Vineyards, "Private Reserve, Napa", 2010	60.
355	Byron Vineyards, "Santa Maria Valley", 2009-10	44.
295	Cakebread Cellars, "Napa", 2010	70.
257	Cambria Winery & Vineyards, "Katherine's Vineyard", 2010	35.
395	Chalk Hill Winery, "Chalk Hill", 2009-10	75.
50	Chalone Vineyards, "Monterey", 2008-09	65.
349	Far Niente Winery, "Napa Valley", 2010	95.
83	Ferrari-Carano Vineyards, "Alexander Valley", 2009-10	55.
258	Ferrari-Carano Vineyards, "Reserve", 2010	80.
87	Franciscan Vineyards, "Cuvee Sauvage, Napa", 2010	65.
241	Grgich Hills Cellar, "Napa Valley", 2009	90.
322	Grgich Hills Cellar, "Napa Valley", 2008-09	46. <i>half</i>
456	Hess Collection, "Monterey", 2010	45.
363	Hess Collection, "Suskol Estate Vineyards", 2009	45.
458	Paul Hobbs Cellars, "Russian River Valley", 2009-10	80.
119	Jordan, Sonoma Valley, 2009-10	55.
371	Kendall-Jackson Vineyards & Winery, "Grand Reserve", 2010	40.
26	Kistler, "Les Noisetieres, Sonoma Coast", 2010	100.
368	Matanzas Creek Winery, "Sonoma", 2008	55.
142	Matanzas Creek Winery, "Sonoma", 2007-08	29. <i>half</i>
461	Mer et Soleil, "Central Coast", 2008	65.
335	Robert Mondavi Winery, "Napa / Carneros", 2009	50.
336	Robert Mondavi Winery, "Reserve", 2009	85.
268	Chateau Montelena, "Napa Valley", 2009	65.
110	Patz & Hall Wine Co., "Dutton Ranch", 2009	34. <i>half</i>
171	Patz & Hall Wine Co., "Sonoma Coast", 2009	75.

CHARDONNAY

California

941	Ramey Wine Cellars, Carneros, 2007-08	59.
111	Ramey Wine Cellars, "Russian River", 2008-09	60.
112	Ramey Wine Cellars, "Russian River", 2009	34. <i>half</i>
940	Ridge, "Monte Bello", 2003-04	85.
151	Saintsbury, "Brown Ranch, Carneros", 2006	90.
252	Simi Winery, "Sonoma County", 2009	39.
342	Sonoma-Cutrer Vineyards, "Les Pierres Vineyard", 2009-10	65.
77	Sonoma-Cutrer Vineyards, "Russian River Ranches", 2010	42.
357	Sonoma-Cutrer Vineyards, "Russian River Ranches", 2010	23. <i>half</i>
433	Sonoma-Cutrer Vineyards, Founders Reserve, "R.R.R.", 1982	500. <i>3 liter</i>
501	Chateau Souverain, "Alexander Valley", 2010	35.
351	Chateau St. Jean, "Robert Young Vineyards", 2009	55.
341	Chateau St. Jean, "Sonoma County", 2010	35.
361	Stag's Leap Wine Cellars, "Karia", "Napa Valley", 2009	59.
132	Staglin Family Vineyard, "Salus Estate", Rutherford, 2009	65.
450	Steele Wines, "California", 2009	42.
451	Steele Wines, "California", 2009	22. <i>half</i>
343	Sterling Vineyards, "Napa Valley", 2008-09	36.
330	Trefethen Vineyards, "Oak Knoll District", 2010	50.
34	Villa Mt. Eden Winery, "Grand Reserve", 2007	32.

Oregon

128	Domaine Drouhin, Arthur Chardonnay, 2009	55.
129	Ponzi, Chardonnay, 2008	36.
124	Domaine Serene, Chardonnay, "Sud", 2000	60.

Rhode Island

542	Sakonnet Vineyards, "Estate", 2007-08	34.
-----	---------------------------------------	-----

OTHER AMERICAN WHITES

California

374	Sauvignon Blanc, Duckhorn Vineyards, "Napa", 2010	52.
319	Sauvignon Blanc, Cakebread Cellars, "Napa", 2010	55.
369	Sauvignon Blanc, Matanzas Creek Winery, "Sonoma", 2010	42.
372	Sauvignon Blanc, Matanzas Creek Winery, "Sonoma", 2010	22. <i>half</i>
68	Sauvignon Blanc, Sterling Vineyards, "Napa", 2011	35.
321	Sauvignon Blanc, Frog's Leap Winery, "Rutherford", 2011	45.
131	Sauvignon Blanc, Merry Edwards, 2010	65.
135	Sauvignon Blanc, Merry Edwards, 2010	35. <i>half</i>
378	Fume Blanc, Robert Mondavi Winery, "Napa", 2009	40.
390	Fume Blanc, "Reserve, To-Kalon Vineyard", 2009 Robert Mondavi Winery	80.
240	Fume Blanc, Ferrari-Carano Winery, "Sonoma County", 2010	46.
130	Fume Blanc, Grgich Hills Cellar, "Napa Valley", 2009	62.
137	Fume Blanc, Grgich Hills Cellar, "Napa Valley", 2009	35. <i>half</i>
402	"Conundrum", Caymus Vineyards, 2010	45.
318	Pinot Grigio, Luna Vineyards, "Napa County", 2010	42.
260	Pinot Gris, Au Bon Climat, "Santa Barbara", 2009	42.
331	Riesling, Chateau St. Jean, "Sonoma County", 2010	39.

Rhode Island

541	Fume / Vidal Blanc, Sakonnet Vineyards, "Estate", 2010	32.
-----	--	-----

Washington

136	Eroica, Chateau Ste. Michelle / Dr. Loosen, Riesling, 2010	45.
-----	--	-----

Oregon

122	King Estate, Pinot Gris, "Domaine", 2010	42.
127	Willakenzie Estate, Pinot Gris, 2010	38.

FRANCE

White Burgundy

MACON

282	Macon Chardonnay, Domaine Talmard, 2010	35.
203	Macon Verze, Domaines Leflaive, 2009	55.

RULLY

204	1er Cru, "Mont Palais", Domaine J. M. Boillot, 2002	60.
-----	---	-----

FUISSE

266	Pouilly Fuisse, Louis Jadot, 2010	44.
292	Pouilly Fuisse, Louis Jadot, 2010	23. <i>half</i>
288	Pouilly Fuisse, 2009 Domaine J. A. Ferret	58.
301	Chateau Fuisse, "Les Combettes", 2008-09 Domaine Marcel Vincent	95.
303	Pouilly Fuisse, "Cuvee Hors Classe", "Les Menetrieres", 1996 Domaine J. A. Ferret	85.
905	Pouilly Fuisse, "Cuvee Hors Classe", "Les Menetrieres", 1996 Domaine J. A. Ferret	125. <i>mag.</i>

CHABLIS

242	"Vieilles Vignes", Domaine Etienne Defaix, 2007-08	48.
-----	--	-----

BOURGOGNE

210	Bourgogne Blanc, "Les Herbeux", Domaine Caillot, 2007	50.
212	Bourgogne Blanc, Domaine Comte Georges de Vogue, 1996	95.

FRANCE

White Burgundy

BEAUNE

311	"Clos des Mouches", Maison Joseph Drouhin, 2004	110.
285	"Clos des Mouches", Maison Joseph Drouhin, 2002	98.
289	"Clos des Mouches", Maison Joseph Drouhin, 1996	90.

MEURSAULT

310	1er Cru, "Caillerets", Louis Jadot, 1999	100.
228	1er Cru, "Perrieres", Domaine Latour Giraud, 1999	75.
314	1er Cru, "Perrieres", Louis Jadot, 2002	135.
194	1er Cru, "Tillets", Verget, 1999	70.
313	1er Cru, Genevrieres, Louis Latour, 1979	90.
489	"Clos du Cromin", Domaine Caillot, 2005	110.

CHASSAGNE MONTRACHET

233	Chassagne Montrachet, Domaine Ramonet, 2004	140.
177	1er Cru, "Les Caillerets", Domaine Marc Morey, 1996	85.
237	1er Cru, "En Cailleret", Louis Jadot, 2002	85.
291	1er Cru, "Morgeot", "Monopole Clos de la Chapelle", 2002 Domaine Duc de Magenta, Louis Jadot	130.
358	1er Cru, "Morgeot", "Monopole Clos de la Chapelle", 1999 Domaine Duc de Magenta, Louis Jadot	140.
243	1er Cru, "Morgeot", Domaine Ramonet, 2004	170.
144	"Marquis de Laguiche", Maison Joseph Drouhin, 2007	135.

PULIGNY MONTRACHET

155	1er Cru, "Champs Canet", Domaine Latour Giraud, 1999	75.
191	1er Cru, "Clos de la Garenne", Domaine du Duc de Magenta, 2002	130.
550	1er Cru, "Clavoillon", Domaine Leflaive, 2006	225.
251	1er Cru, "Les Combettes", Domaine Leflaive, 1998	225.
170	1er Cru, "Combettes", Domaine Robert Ampeau, 1982	125.

FRANCE

White Burgundy

CORTON CHARLEMAGNE
GRAND CRU

230	Domaine Marc Colin, 1999	160.
117	Verget, 1999	150.
259	Domaine des Heritiers Louis Jadot, 2002	190.
214	Domaine des Heritiers Louis Jadot, 1999	185.
185	Domaine des Heritiers Louis Jadot, 1996	195.
255	Domaine Louis Latour, 2004	190.
326	Domaine Louis Latour, 2002	170.
261	Domaine Tollot-Beaut, 1999	175.

BIENVENUES BATARD MONTRACHET
GRAND CRU

263	Domaine Ramonet, 2004	295.
-----	-----------------------	------

CRIOTS BATARD MONTRACHET
GRAND CRU

327	Olivier Leflaive, 1999	225.
324	Louis Jadot, 2002	240.

CHEVALIER MONTRACHET
GRAND CRU

334	Domaine Georges Leleger, 1996	275.
333	Louis Jadot, 2002	250.
309	"Les Demoiselles", Domaine des Heritiers Louis Jadot, 1996	275.

MONTRACHET
GRAND CRU

354	Domaine de la Romanee Conti, 1995	2,750.
-----	-----------------------------------	--------

FRANCE

White Bordeaux

DRY

213	Chateau Tour de Mirambeau, Entre Deux Mers, 2010	32.
264	Chateau Carbonnieux, Pessac-Leognan, 2007	90.

SWEET

478	Chateau Giraud, Sauternes, 1988	90.
400	Chateau Giraud, Sauternes, 1983	110.
403	Chateau Rieussec, Sauternes, 1986	90.
418	Chateau Climens, Barsac, 1988	65. <i>half</i>
481	Chateau Coutet, Sauternes, 1986	110.
482	Chateau Lafaurie Peyraguey, Sauternes, 1988	95.
60	Chateau de Fargues, Sauternes, 1980	140.
63	Chateau de Fargues, Sauternes, 1976	200.
67	Chateau de Fargues, Sauternes, 1975	200.
484	Chateau d'Yquem, Sauternes, 1988	350. <i>half</i>
486	Chateau d'Yquem, Sauternes, 1980	350. <i>half</i>
488	Chateau d'Yquem, Sauternes, 1979	365. <i>half</i>
352	Chateau d'Yquem, 1976	3,000. <i>mag.</i>

Loire

70	Muscadet "Hermine d'Or", Domaine La Louvetrie, 2010	30.
250	Sancerre, "Cuvee Bonnes Bouches", Domaine Henri de Bourgeois, 2010	42.
238	Sancerre, "Cuvee Bonnes Bouches", Domaine Henri de Bourgeois, 2010	23. <i>half</i>
73	Pouilly Fume, "Chateau de Nozet", Domaine de Ladoucette, 2008	60.
267	Savennieres "Clos de la Coulee de Serrant", Domaine N. Joly, 1989	85.
138	Quarts de Chaume, Domaine des Baumard, 1997	80.
360	Quarts de Chaume, Domaine des Baumard, 1997	50. <i>half</i>

Alsace

72	Pinot Blanc, "Cuvee les Amours", Jean Hugel, 2008	35.
174	Pinot d'Alsace, "Zind", Domaine Zind-Humbrecht, 2009	39.

GERMANY

Riesling

254	Piesporter Goldtropfchen Riesling Spatlese, 2011 Von Kesselstatt	50.
271	Maximin Grunhaus, "Abtsberg", Spatlese, 2008 Von Schubert	55.
107	Wehlener Sonnenuhr, Riesling Auslese, 2004 Joh. Jos. Prum	90.

Riesling Spitzenweine

222	Serriger Herrenberg, "Eiswein", 1983 Bert Simon	75. <i>half</i>
256	Avelsbacher Hammerstein, Riesling Eiswein, 1983 Staats Domaine	55. <i>half</i>
200	Johannisberger Mittelholle, Riesling Trockenbeerenauslese, 1976 von Munn	450.

ITALY

568	Tenutae Lageder, Pinot Grigio, "Porer", 2010	44.
446	Antinori, Chardonnay, "Cervaro della Sala", 2009	48.
40	Antinori, Orvieto Classico, "Campogrande", 2010	35.
33	Pieropan, Soave, 2009	48.
604	Peter Zimmer, Pinot Grigio, "Alto Adige", 2011	40.
447	Jermann, Tunina, 2007-08	85.
529	Jermann, Dreams, 2004	125.
43	La Scolca, Gavi di Gavi, "Black Label", 2010	59.
44	Mastroberardino, Greco di Tufo, 2010	40.

H U N G A R Y

113	Royal Tokaji Wine Company, Furmint, 2007-08	35.
Tokaji Aszu		
432	Royal Tokaji Wine Company, "1er Cru, St. Tamas, 6 Puttonyos", 1995	250. 500ML
Aszu Essencia		
375	Royal Tokaji Wine Company, 1999	600. 500ML
389	Royal Tokaji Wine Company, 1993	600. 500ML

A U S T R A L I A

641	De Bortoli Wines, Sauternes / Noble One, 1982	75. half
652	Henschke, Semillon, "Louis", Eden Valley, 1998	35.
643	Leeuwin Estate, Chardonnay, "Art Series", 2001, 2006	75.
642	Penfolds, Chardonnay, "Yattarna", 1998-99	90.
651	Petaluma, Chardonnay, "Tiers", 1998-99	85.

N E W Z E A L A N D

383	Cloudy Bay, Chardonnay, 2008-09	59.
367	Cloudy Bay, Sauvignon Blanc, 2011	59.
401	Craggy Range, Sauvignon Blanc, Martinborough, 2011	45.
405	Felton Road, Chardonnay, "Central Otago", 2006-07	55.
202	Kumeu River, Chardonnay, "Kumeu", 2004-05	55.
406	Mount Nelson, Sauvignon Blanc, Marlborough, 2010	35.
108	Vinoptima, Gewurztraminer, "Ormond", 2003	85.

S O U T H A F R I C A

329	Glen Carlou, Chardonnay, 2010	40.
345	Hamilton Russell Estate, Chardonnay, 2010	40.

A R G E N T I N A

442	Catena / Bodegas Esmeralda, Chardonnay, 2009-10	40.
-----	---	-----

NAME

ADDRESS

DATE

Bob Wolff French Club London

Jimmy Fierall Los Angeles
 (Booker Mason)

Alvin Karpis
 1000 1st St. New York

Beat Earl
 1000 1st St. New York

Anne V
 1000 1st St. New York

S. E. Hartley
 1000 1st St. New York

Enid Lincoln
 1000 1st St. New York

Don Braden
 1000 1st St. New York

A. J. Thompson
 1000 1st St. New York

Mike Casper
 1000 1st St. New York

W. H. Hesse
 1000 1st St. New York

Deirdre Loomer
 1000 1st St. New York

Major Mrs. Neals Sparsall
 1000 1st St. New York

Elizabeth Taylor with Mr. and Mrs. Athanas
 and Paul, Robert, Anthony and Michael Athanas

Montpelier, N.Y.
 1000 1st St. New York

Chgo.
 1000 1st St. New York

London
 1000 1st St. New York

35 Parson Dr.
 1000 1st St. New York

73 Newbury St
 1000 1st St. New York

New York City
 1000 1st St. New York

Sept 16, 1965 - Ex

Sept 22, 1965

Sept 28, 1965 - Hurv

Sept 28, 1965

Sept 29, 1965 - F

Sept 29, 1965 - F

Sept 29, 1965 - F

Sept 29, 1965 - F

Sept 29, 1965 - F

Sept 29, 1965 - F

Sept 29, 1965 - F

Sept 29, 1965 - F

Sept 29, 1965 - F

Sept 29, 1965 - F

Sept 29, 1965 - F

Sept 29, 1965 - F

Sept 29, 1965 - F

Sept 29, 1965 - F

Sept 29, 1965 - F

Sept 29, 1965 - F

Sept 29, 1965 - F

Sept 29, 1965 - F

CABERNET SAUVIGNON / PROPRIETARY

California

178	Beaulieu Vineyard, "Rutherford", 2008-09	55.
163	Beaulieu Vineyard, "Rutherford", 2008-09	28. <i>half</i>
134	Chateau Souverain, "Alexander Valley", 2010	55.
206	Chateau Souverain, "Alexander Valley", 1997	65.
229	Chateau Souverain, "Alexander Valley", 1991	65.
180	Robert Mondavi Winery, "Napa Valley", 2009	65.
370	Robert Mondavi Winery, "Oakville", 2009	100.
188	Beringer Vineyards, "Knights Valley", 2009	65.
718	Robert Mondavi Winery, "30th Anniversary", 1996	200.
689	Robert Mondavi Winery, "Reserve", 1995	160.
690	Robert Mondavi Winery, "Reserve", 1994	220.
691	Robert Mondavi Winery, "Reserve", 1993	200.
692	Robert Mondavi Winery, "Reserve", 1991	240.
381	Robert Mondavi Winery, "Reserve", 1978	450. <i>mag.</i>
382	Robert Mondavi Winery, "Reserve", 1974	650. <i>mag.</i>
688	Robert Mondavi Winery, "Reserve", "To-Kalon Vineyard", 1998	180.
78	Robert Mondavi Winery, "Reserve", "To-Kalon Vineyard", 1997	200.
495	Hess Collection, "Mount Veeder Estate", 2008	75.
497	Beaulieu Vineyard, "Georges de Latour", Private Reserve, 1977	175.
800	Beaulieu Vineyard, "Georges de Latour", Private Reserve, 1975	165.
385	Beaulieu Vineyard, "Georges de Latour", Private Reserve, 1978	300. <i>mag.</i>
815	Beaulieu Vineyard, "Clone 4", Rutherford, 1995	185.
156	Beaulieu Vineyard, "Clone 6", Rutherford, 1996	225.
157	Jordan Vineyards and Winery, "Alexander Valley", 2008	90.
208	Stag's Leap Wine Cellars, "Artemis", 2009	75.
950	Stag's Leap Wine Cellars, "Artemis", 2008	40. <i>half</i>
729	Stag's Leap Wine Cellars, "SLV", 1997	185.
719	Stag's Leap Wine Cellars, "SLV", 1994	200.
585	Stag's Leap Wine Cellars, "Cask 23", 1997	350.
592	Stag's Leap Wine Cellars, "Cask 23", 1992	350.
160	Beringer Vineyards, "Private Reserve, Napa", 1996	165.
161	Beringer Vineyards, "Private Reserve, Napa", 1994	185.
693	Beringer Vineyards, "Private Reserve, Napa", 1991	185.
379	Beringer Vineyards, "Private Reserve, Napa", 1991	400. <i>mag.</i>

CABERNET SAUVIGNON / PROPRIETARY

California

429	St. Francis, "Sonoma County", 2008	45.
588	Araujo Estate Wines, "Eisele Vineyard", 1997	495.
79	Araujo Estate Wines, "Eisele Vineyard", 1996	450.
46	Araujo Estate Wines, "Eisele Vineyard", 1995	500.
80	Araujo Estate Wines, "Eisele Vineyard", 1994	525.
320	Provenance, Rutherford, Napa Valley, 1999	125.
589	Clos du Val, "Georges III Vineyard", Napa, 1997	120.
416	Joseph Phelps Vineyards, "Napa Valley", 2009	120.
538	Benziger, "Sonoma County", 2008	45.
721	Caymus Vineyards, "Napa Valley", 2010	110.
394	Caymus Vineyards, "Special Selection", "Napa Valley", 1997	300.
183	Caymus Vineyards, "Special Selection", "Napa Valley", 1994	275.
396	Caymus Vineyards, "Special Selection", "Napa Valley", 1990	250.
179	Caymus Vineyards, "Special Selection", "Napa Valley", 1992	550. mag.
184	Silver Oak Vineyards, "Alexander Valley", 2007-08	155.
508	Ridge Vineyards, "Monte Bello", 1997	245.
697	"Opus One", "Oakville District", Mondavi / Rothschild, 2008	295.
384	"Opus One", "Oakville District", Mondavi / Rothschild, 1995	600. mag.
827	Joseph Phelps Vineyards, "Eisele Vineyard", 1978	400.
423	"Insignia", Joseph Phelps Vineyards, "Napa Valley", 1994	350.
595	"Insignia", Joseph Phelps Vineyards, "Napa Valley", 1994	1,500. d. mag.
730	Joseph Phelps Vineyards, "Backus Vineyard", 1977	275.
705	"Dominus", John Daniel Society, "Napa Valley", 1997	225.
709	"Dominus", John Daniel Society, "Napa Valley", 1994	475. mag.

CABERNET SAUVIGNON / PROPRIETARY

California

410	"Dominus", John Daniel Society, "Napa Valley", 1994	800. <i>d. mag.</i>
192	"Siena", Ferrari-Carano Winery, "Sonoma Valley", 2009	46.
700	"M", (by Michael Mondavi), "Animo Vineyard, Napa Valley", 2005	240.
701	"Continuum", (by Tim Mondavi), Oakville / Napa Valley, 2005	240.
711	Forman, "Napa Valley", 1991	135.
828	Forman, "Napa Valley", 1983	100.
710	Simi, "Reserve", Alexander Valley, 1991	110.
591	Quintessa, "Rutherford, Napa Valley", 2008	170.
731	Swanson, "Alexis", Napa Valley, 1998	135.
733	Constant, Napa Valley, 1997	155.
734	Constant, Napa Valley, 1995	165.
630	Duckhorn Vineyards, "Napa Valley", 1994	200.
707	Hewitt Vineyard, "Estate, Rutherford", 2004	95.
920	Spottswoode Estate Vineyard & Winery, "Family Estate Napa", 2005-06	200.
936	Spottswoode Estate Vineyard & Winery, "Family Estate Napa", 1991	275.
935	Far Niente, "Oakville", 2007	175.
921	Far Niente, "Oakville", 1997	250.
917	Far Niente, "Oakville", 1996	250.
937	Far Niente, "Oakville", 1994	300.
420	Chateau Montelena, "Napa Valley", 2009	70.
918	Chateau Montelena, "Estate", "Napa Valley", 2004	185.
924	Chateau Montelena, "Estate", "Napa Valley", 2003	175.
923	Chateau Montelena, "Estate", "Napa Valley", 1997	100. <i>half</i>
409	Chateau Montelena, "Estate Centennial", "Napa Valley", 1978	300.
712	Heitz Cellar, "Napa Valley", 1997	125.

CABERNET SAUVIGNON / PROPRIETARY

California

716	Dunn Vineyards, "Napa Valley, Howell Mountain", 1983	175.
681	La Jota Vineyards, "Howell Mountain", 1994	250.
682	Cain Five, "Estate", "Napa Valley", 1994	250.
683	Pahlmeyer, "Caldwell Vineyard", "Napa Valley", 1990	250.
717	Groth, "Reserve", "Napa Valley", 1994	195.
816	Lokoya, "Rutherford", "Napa Valley", 1997	185.
822	Diamond Creek, "Red Rock Terrace", "Napa Valley", 1997	225.
817	Diamond Creek, "Red Rock Terrace", "Napa Valley", 1990	200.
662	Diamond Creek, "Volcanic Hill", "Napa Valley", 1990	200.
387	Diamond Creek, "Gravelly Meadow", Napa Valley, 1975	550. <i>mag.</i>
655	Pine Ridge, "Stag's Leap District", 1997	100.
593	Santa Cruz Mountain Vineyard, 1980	75.
594	Santa Cruz Mountain Vineyard, 1978	75.
703	Grgich Hills, "Napa Valley", 1994	185.
708	Lokoya, Diamond Mountain, Napa Valley, 1997	140.
663	Merryvale, "Profile", "Napa Valley", 1997	110.
386	Merryvale, Napa Valley, "Reserve", 1999	175. <i>mag.</i>
654	Corison, "Napa Valley", 1997	125.
685	Stonestreet, "Christophers Vineyard", "Alexander Valley", 1996	100.
573	Shafer Vineyards, "Hillside Select", "Napa, Stag's Leap Dist.", 1998	425.
576	Shafer Vineyards, "Hillside Select", "Napa, Stag's Leap Dist.", 1997	550.
574	Shafer Vineyards, "Hillside Select", "Napa, Stag's Leap Dist.", 1996	465.
575	Shafer Vineyards, "Hillside Select", "Napa, Stag's Leap Dist.", 1994	495.
579	Shafer Vineyards, "Hillside Select", "Napa, Stag's Leap Dist.", 1992	425.
531	Harlan Estate, "Napa Valley", 2002	1,200.
532	Harlan Estate, "Napa Valley", 2001	1,200.
533	Harlan Estate, "Napa Valley", 2000	900.
506	Harlan Estate, "Napa Valley", 1997	1,400.
534	Harlan Estate, "Napa Valley", 1996	950.
535	Harlan Estate, "Napa Valley", 1995	950.
536	Harlan Estate, "Napa Valley", 1994	1,500.
515	Harlan Estate, "Napa Valley", 1993	950.
537	Harlan Estate, "Napa Valley", 1992	950.

M E R L O T

California

520	Beringer Vineyards, "Bancroft Ranch-Howell Mountain", 2005	125.
755	Beringer Vineyards, "Bancroft Ranch-Howell Mountain", 1991	125.
412	Beringer Vineyards, "Bancroft Ranch-Howell Mountain", 1991	225. <i>mag.</i>
434	Duckhorn Vineyards, Napa Valley, "Three Palms Vineyard", 1994	550. <i>mag.</i>
519	Ferrari-Carano Winery, "Sonoma County", 2009	68.
518	Matanzas Creek Winery, "Sonoma Valley", 2006-07	85.
359	Shafer Vineyards, "Napa Valley", 2008	80.
516	Chateau Souverain, "Alexander Valley", 2008	45.
197	St. Francis, "Sonoma Valley", 2008	47.
158	Chateau St. Jean, "Sonoma County", 2008	42.
599	Swanson, "Napa Valley", 2002	95.
517	Matanzas Creek Winery, "Journey", 1994	175.

PINOT NOIR

California

659	Au Bon Climat, "Santa Barbara", 2009	52.
658	David Bruce, "Central Coast", 2009	65.
825	Emeritus, "Russian River Valley", 2010	57.
657	Hartford, "Lands Edge Vineyard", "Sonoma Coast", 2007-08	60.
751	Paul Hobbs Cellars, "Russian River Ranches", 2008-09	95.
752	Merry Edwards, "Russian River Valley", 2009	90.
209	Robert Mondavi Winery, "Carneros", 2010	57.
35	Saintsbury, "Carneros-Brown Ranch", 2008	70.
810	Sonoma-Cutrer Vineyards, "Sonoma Coast", 2008-09	65.
645	Hirsch, "San Andreas Fault", 2009	95.
687	Hirsch, "San Andreas Fault", 2009	47. <i>half</i>

Oregon

698	St. Innocent, "Zenith Vineyard", Willamette Valley, 2010	70.
626	Willakenzie Estate, "Estate Cuvee", Willamette Valley, 2010	60.
684	King Estate, 2010	60.

OTHER CALIFORNIA REDS

661	Syrah, Qupe, "Bien Nacido Hillside Estate", 2009	45.
670	Zinfandel, Turley, 2008-09	70.

A Selection of Exceptional Chateau Bottled Red Bordeaux Wines

Crus Classe

RED BORDEAUX

PAUILLAC

1er GRAND CRU

193	Chateau Lafite Rothschild, 1982	5,000.
911	Chateau Lafite Rothschild, 1976	3,500. <i>mag.</i>
120	Chateau Latour, 1982	3,500.
116	Chateau Latour, 1978	1,000.
201	Chateau Latour, 1975	650.
189	Chateau Latour, 1967	650.
350	Chateau Latour, 1964	1,200. <i>mag.</i>
118	Chateau Mouton Rothschild, 1986	1,400.
216	Chateau Mouton Rothschild, 1983	800.
218	Chateau Mouton Rothschild, 1982	3,500.
123	Chateau Mouton Rothschild, 1975	650.

MARGAUX

1er GRAND CRU

221	Chateau Margaux, 1983	2,800.
227	Chateau Margaux, 1982	3,500.
167	Chateau Margaux, 1978	1,200.

GRAVES

1er GRAND CRU

125	Chateau Haut Brion, 1982	3,500.
69	Chateau Haut Brion, 1978	1,800.
62	Chateau Haut Brion, 1976	600.

ST. EMILION

1er GRAND CRU

231	Chateau Cheval Blanc, 1979	475.
-----	----------------------------	------

POMEROL

126	Chateau Petrus, 1979	2,800.
636	Chateau Petrus, 1975	3,500.

RED BORDEAUX

PAUILLAC

CRUS EXCEPTIONNELS

297	Chateau Grand-Puy-Lacoste, 1982	450.
287	Chateau Pichon Longueville, "Comtesse de Lalande", 1983	300.
637	Chateau Pichon Longueville, "Comtesse de Lalande", 1982	675.
632	Chateau Pichon Longueville, "Comtesse de Lalande", 1978	350.
293	Chateau Pichon Longueville Baron, 1989	450.
392	Chateau Pichon Lalande, 1970	600. <i>mag.</i>
300	Chateau Pichon Lalande, 1978	1,200. <i>d. mag.</i>
299	Chateau Pichon Lalande, 1978	2,000. <i>jer.</i>

MARGAUX

CRUS EXCEPTIONNELS

28	Chateau Palmer, 1979	210.
399	Chateau Palmer, 1976	450. <i>mag.</i>
338	Chateau Palmer, 1976	750. <i>d. mag.</i>
298	Chateau Palmer, 1976	1,100. <i>imp.</i>
84	Chateau Lascombes, 2005	185.

GRAVES

CRUS EXCEPTIONNELS

634	Chateau La Mission Haut Brion, 1982	1,800.
280	Chateau La Mission Haut Brion, 1975	1,800.
279	Chateau La Mission Haut Brion, 1966	225. <i>half</i>
308	Chateau Bahans-Haut-Brion, 2003	165.
306	Chateau Haut-Bailly, 1982	275.

ST. EMILION

CRUS EXCEPTIONNELS

37	Chateau La Dominique, 1982	225.
----	----------------------------	------

RED BORDEAUX

ST. JULIEN

CRUS EXCEPTIONNELS

317	Chateau Leoville Las Cases, 1982	675.
152	Chateau Leoville Las Cases, 1979	225.
346	Chateau Leoville Las Cases, 1978	550. <i>mag.</i>
347	Chateau Leoville Las Cases, 1975	500. <i>mag.</i>
154	Chateau Gruaud Larose, 1989	275.
159	Chateau Gruaud Larose, 1982	475.
121	Chateau Gruaud Larose, 1975	225.
621	Chateau Leoville Barton, 1989	250.
669	Chateau Branaire (Duluc-Ducru), 1976	110.
393	Chateau Beychevelle, 1966	555. <i>mag.</i>

ST. ESTEPHE

CRUS EXCEPTIONNELS

635	Chateau Cos d'Estournel, 1982	550.
671	Chateau Montrose, 1975	110.
397	Chateau Montrose, 1970	650. <i>mag.</i>
398	Chateau Montrose, 1967	450. <i>mag.</i>
388	Chateau Les Ormes de Pez, 1971	150. <i>mag.</i>

POMEROL

41	Chateau Trotanoy, 1982	700.
101	Chateau Trotanoy, 1979	250.
42	Chateau Trotanoy, 1978	250.
226	Chateau Le Bon Pasteur, 1982	325.
302	Chateau Petit Village, 1982	195.

RED BURGUNDY

823	Morgon, 2009 Domaine Jean Descombes	35.
824	Julienas, 2009 Domaine Chateau de Capitans	40.
801	Givry, 1er Cru, "Clos Les Grandes Vignes", 2005 Domaine Parize Pere et Fils	75.
811	Santenay 1er Cru, "Clos de Tavannes", 1996 Domaine Jean Noel Gagnard	75.
934	Savigny-Les-Beaune, 1er Cru, "Les Serpenteries", 1990 Domaine M. Ecard	85.
802	Chorey Cote de Beaune, 1996 Domaine Tollot-Beaut & Fils	85.
725	Monthelie, "Les Duresses", 1995 Domaine des Comtes Lafon	75.
812	Vosne Romanee, 1990 Domaine Jean Gros	110.
960	Vosne Romanee, 1983 Domaine Mugneret-Gribourg	75.
826	Vosne Romanee, 1er Cru, "Monopole", "Clos des Reas", 1990 Domaine Jean Gros	350.
805	Vosne Romanee, 1er Cru, "Monopole", "Clos des Reas", 1983 Domaine Jean Gros	75.
814	Vosne Romanee, 1er Cru, "Monopole", "Clos des Reas", 1982 Domaine Jean Gros	75.
728	Corton, "Clos du Roi", "Grand Cru", 1990 Domaine Chandon de Briailles	225.
723	Volnay en Chevnet, 2005 Louis Latour	85.
340	Volnay, 1er Cru, "Clos de la Bousse d'Or", 1972 Domaine de la Pousse d'Or	450. <i>mag.</i>
727	Gevrey Chambertin, 1er Cru, "Combe Aux Moines", 1990 Domaine Philippe Leclerc	200.
813	Gevrey-Chambertin, 1er Cru, "Les Evocelles", 1990 Domaine Philippe Batacchi	175.
804	Ruchottes Chambertin, 1983 Domaine Georges Mugneret	250.

RED BURGUNDY

903	Clos de la Roche, "Grand Cru", 1990 Domaine Dujac	475.
724	Clos de la Roche, "Grand Cru", 1990 Domaine Faiveley	350.
799	Clos Vougeot, 1990 Domaine Daniel Rion & Fils	225.
726	Echezeaux, "Grand Cru", 1990 Domaine Mugneret-Gibourg	275.
323	Echezeaux, "Grand Cru", "Vieille Vigne", 1990 Domaine Mongeard-Mugneret	400.
902	Bonnes-Mares, 1983 Domaine Comte Georges de Vogue	250.
926	La Tache, "Grand Cru", 1972 Domaine de la Romanee Conti	2,500.

RHONE

86	Cotes du Rhone, 2009 E. Guigal	36.
512	Crozes Hermitage, "Domaine de Thalabert", 2006-07 Domaine Paul Jaboulet Aine	45.
353	Crozes Hermitage, 1995 Domaine Paul Jaboulet Aine	125. <i>mag.</i>
527	Gigondas, "Domaine du Pesquier", 1990	55.
555	Chateauneuf du Pape, "Boisrenard", 1990 Domaine Paul Coulon	165.
503	Chateauneuf du Pape, "La Crau", 1995 Domaine du Vieux Telegraphe	150.
391	Chateauneuf du Pape, "La Crau", 1990 Domaine du Vieux Telegraphe	175.
504	Chateauneuf du Pape, 1998 Chateau de Beaucastel	165.
505	Chateauneuf du Pape, 1990 Chateau de Beaucastel	175.
408	Chateauneuf du Pape, "Hommage a Jacques Perrin", 1990 Chateau de Beaucastel	2,500. <i>mag.</i>

R H O N E

521	Chateauneuf du Pape, 1995 Chateau La Nerthe	150.
348	Chateauneuf du Pape, "Les Cedres", 1978 Domaine Paul Jaboulet Aine	150.
583	Chateauneuf du Pape, "Reserve", 1983 Chateau Rayas	400.
249	Chateauneuf du Pape, "Reserve", 1979 Chateau Rayas	400.
362	Cornas, "Domaine de Saint-Pierre", 1999 Domaine Paul Jaboulet Aine	150.
364	Cornas, "Domaine de Saint-Pierre", 1998 Domaine Paul Jaboulet Aine	150.
510	Cornas, "Domaine de Saint-Pierre", 1996 Domaine Paul Jaboulet Aine	150.
500	Cornas, 1979 Domaine Robert Michel	95.
502	Hermitage, "La Chapelle", 1999 Domaine Paul Jaboulet Aine	160.
695	Hermitage, "La Chapelle", 1998 Domaine Paul Jaboulet Aine	175.
696	Hermitage, "La Chapelle", 1996 Domaine Paul Jaboulet Aine	175.
511	Hermitage, "La Chapelle", 1995 Domaine Paul Jaboulet Aine	175.
499	Hermitage "La Chapelle", 1983 Domaine Paul Jaboulet Aine	300.
356	Hermitage, "La Chapelle", 1983 Domaine Paul Jaboulet Aine	425. <i>mag.</i>
509	Hermitage, 1976 E. Guigal	150.
522	Cote-Rotie, "Les Grandes Places", 1998 Domaine Jean-Michel Gerin	350.
376	Cote-Rotie, "Cotes Brune et Blonde", 2006 E. Guigal	250.
498	Cote-Rotie, "Cotes Brune et Blonde", 1976 E. Guigal	250.
572	Cote-Rotie, "La Landonne", 1979 E. Guigal	450.

P R O V E N C E

577	Mas de Daumas Gassac, 1989 Domaine V. Guibert de la Vaissiere	95.
578	Bandol, "Cuvee Speciale", 1990 Domaine Tempier	95.
553	Coteaux d'Aix en Provence, "Les Baux", 1989 Domaine de Trevallon	60.

ITALY

569	Chianti Rufina, "Nipozzano, Riserva", 2007-08 Marchesi de Frescobaldi	45.
265	Chianti Classico, "Peppoli", 2008 Antinori	45.
929	Le Volte, Toscana, 2009 Ornellaia	49.
901	Tenuta di Castiglioni, "IGT", 2008 Marchesi de Frescobaldi	45.
196	"Le Serre de Nuove", 2008 Tenuta dell'Ornellaia	85.
236	Brunello di Montalcino, Castel Giocondo, 2004 Marchesi de Frescobaldi	145.
424	Brunello di Montalcino, Riserva, Castel Giocondo, 1999 Marchesi de Frescobaldi	200.
916	Brunello di Montalcino, 2005 Luce Della Vita	165.
426	Brunello di Montalcino, "Pian Delle Vigne", 2001 Antinori	185.
930	Mormoreto, Castello di Nipozzano, 2006 Marchesi de Frescobaldi	110.
93	Brancaia, 1998 Mazzei	125.
234	Syrah, "Toscana", 2004 Isole E Olena	95.
186	Montepergoli, Bolgheri, 2001 Enrico Santini	85.
195	Sammarco, 1999 Castello dei Rampolla	150.
143	Sammarco, 1997 Castello dei Rampolla	170.
173	Le Pergole Torte, 1997 Montevertine	235.
913	Collazi, Toscalana, 2001	100.
904	Guado al Tasso, Bolgheri, 1997-98 Antinori	135.
912	Guado al Tasso, Bolgheri, 1995 Antinori	125.

ITALY

962	Cepparello, 1997 Isole e Olena	150.
956	Insoglio del Cinghiale, Toscana, 2004 Campo di Sasso Bibbona	125.
948	Excelsus, Montalcino, 1993 Castello Banfi	100.
919	Toscana, 1998 Siepi	100.
85	Solaia, 1998 Marchese Antinori	275.
199	Ornellaia, 2006 Tenuta dell'Ornellaia	375.
198	Ornellaia, 2004 Tenuta dell'Ornellaia	400.
190	Ornellaia, 2003 Tenuta dell'Ornellaia	400.
931	Ornellaia, 2002 Tenuta dell'Ornellaia	210. <i>half</i>
932	Masseto, 2006 Tenuta dell'Ornellaia	900.
933	Masseto, 2005 Tenuta dell'Ornellaia	800.
915	Masseto, 2004 Tenuta dell'Ornellaia	800.
90	Sassicaia, 1997 Marchesi Incisa Della Rocchetta	450.
898	Sassicaia, 1990 Marchesi Incisa Della Rocchetta	1,000. <i>mag.</i>
848	Lucente, 2008 Tenuta Luce Dela Vite, Toscana	65.

A U S T R A L I A

459	Shiraz, "Kalimna Bin 28", 2009 Penfolds	46.
644	Shiraz, "Coonawara Bin 128", 2010 Penfolds	46.
666	Shiraz, "Hyland", 2010 Penfolds	46.
570	Shiraz-Cabernet Sauvignon-Malbec, Barossa, "Keyneton Estate", 2005 Henschke	80.
571	Shiraz, "Mount Edelstone", 1997 Henschke	95.
646	Shiraz, "The Dead Arm, McLaren Vale", 2006 d'Arenberg	90.
647	Shiraz, "RWT, Barossa Valley", 1997 Penfolds	135.
694	Syrah, "Balmoral", 2001 Rosemont	100.
638	Syrah, "Balmoral", 1996 Rosemont	100.
648	Cabernet-Shiraz, "Bin 389", 2007 Penfolds	70.
656	Cabernet Merlot-Cabernet Franc, "Cyril Henschke", Eaden Valley, 1966 Henschke	175.
649	"GSM", Rhone Blend, 2004 Rosemount Estate	50.
440	Cabernet Sauvignon, "Bin 407", 2006 Penfolds	55.
765	Coonawarra Estate Terra Rossa First Growth, 1993 Parker	175.
91	Shiraz, "Eileen Hardy", 1995 McLarenavale, "Winner Jimmy Watson Trophy"	90.
97	Traditional (Blend), 2001 Rosemount, "Winner Jimmy Watson Trophy"	75.
92	Cabernet Sauvignon, "Bin 707", 2002 Penfolds	275.
95	Cabernet Sauvignon, "Bin 707", 1998 Penfolds	295.
96	Cabernet Sauvignon, "Bin 707", 1997 Penfolds	225.
94	Cabernet Sauvignon, "Bin 707", 1994 Penfolds	295.
66	Cabernet Sauvignon, "Bin 707", 1993 Penfolds	270.

A U S T R A L I A

543	"Grange", Bin 95, 1997 Penfolds	450.
544	"Grange", Bin 95, 1995 Penfolds	450.
539	"Grange", Bin 95, 1994 Penfolds	450.
547	"Grange", Bin 95, 1993 Penfolds	450.
540	"Grange", Bin 95, 1992 Penfolds	450.
546	"Grange", Bin 95, 1991 Penfolds	650.
548	"Grange", Bin 95, 1980 Penfolds	400.

A R G E N T I N A

561	Malbec, "Estate Lots", "Alta", Catena, 2009	65.
513	Malbec, Mendoza, Achaval Ferrer, 2011	55.
514	Quimera, Achaval Ferrer, 2008 (Malbec-Merlot-Cabernet Sauvignon-Cabernet Franc)	85.

C H I L E

304	Merlot, "Cuvee Alexandre", Casa Lapostolle, "Rapel Valley", 2007-08	68.
377	Merlot, "Cuvee Alexandre", Casa Lapostolle, "Rapel Valley", 1994	70.
305	Clos Apalta, Casa Lapostolle, 2006	125.

NAME

ADDRESS

DATE

Huge Jefferys
Gust Loring
Frank Leahy

Los Angeles -
Los Ang
Port land



Tip O'Neill

Franklin Roosevelt
Bobby Stump
Holloman



Vincent Price

Rebecca
Cee
Franklin
Carmichael
Carmichael



Anthony Quinn

Nov. 11
Merv Griffin



Anthony, Esther and Michael Athanas with Merv Griffin

Mary Costa

Buddy Greco

Sheila
Joe Raposo

Therese Kelen

Jan 22-1966

Jan 23, 1966

Los Olivos

Bob Cousy

John Thayer

Patricia Barry

Leon Lubin

Edmund Kleink

Bev. Hills Calif

Boston College

Boston A.A.

Cambridge

New York

Europe

Europe (EUROPE)

3/4/66

3-4-66

Form

Good

(Former President of Brazil)



Anthony Athanas, 1996



The Vineyards of CHAMPAGNE

Heaviest concentrations of
vineyards.....



SPARKLERS

France

CHAMPAGNE

15	Alain Robert, "Le Mesnil"	110.
2	Bollinger, Brut, "Speciale Cuvee"	130.
29	Bollinger, "Grande Annee", 1990	225.
909	Bollinger, "Grande Annee", 1989	450. <i>mag.</i>
14	Bruno Paillard, Brut	85.
18	Delamotte, "Les Mesnil"	85.
39	Charles Heidsieck, "Blanc des Millenaires", 1990	225.
31	Charles Heidsieck, Brut, 1990	225.
13	Krug, "Grande Cuvee"	325.
17	Krug, "Grande Cuvee"	165. <i>half</i>
910	Krug, "Grande Cuvee"	2,500. <i>d. mag.</i>
16	Moet et Chandon, Dom Perignon, 2002	350.
906	Moet et Chandon, Dom Perignon, 1990	900. <i>mag.</i>
23	Moet et Chandon, Dom Perignon, "Rose", 2002	850.
9	Moet et Chandon, Dom Perignon, "Rose", 1998	850.
1	Moet et Chandon, "Imperial"	75.
5	Mumm's, "Cordon Rouge", Brut	65.
11	Perrier Jouet, "Fleur de Champagne", 2002	245.
908	Perrier Jouet, "Fleur de Champagne", 1990	500. <i>mag.</i>
3	Piper Heidsieck, Brut	75.
30	Pol Roger, "Cuvee Sir Winston Churchill", 1990	350.
10	Louis Roederer, "Cristal", 2000	550.
8	Louis Roederer, "Brut Premier"	75.
21	Louis Roederer, "Brut Premier"	40. <i>half</i>
45	Salon, "Le Mesnil", 1995	550.
47	Salon, "Le Mesnil", 1985	550.
4	Taittinger, Brut, "La Francaise"	75.
7	Veuve Clicquot, "Brut-Yellow"	90.
6	Veuve Clicquot, "Brut-Yellow"	50. <i>half</i>
436	Veuve Clicquot, "La Grande Dame", 1998	265.

S P A R K L I N G W I N E S

24	Domaine Carneros, "Brut", California	42.
20	Domaine Chandon, "Blanc de Noirs", California	42.
181	Piper Sonoma, "Brut", California	42.
182	Roederer Estate, "L'Hermitage", California, 2002	70.
25	Schramsberg, "Blanc de Blancs", California, 2009	65.
27	Domaine Ste. Michel, "Blanc de Blancs", California	35.
53	Nino Franco, Prosecco "Rustico", Valdobbiadene, Italy	38.
32	Adami, Prosecco "Vigneto Giardino", Italy, 2008-09	42.
22	Asti Spumante, Martini Rossi, Italy	32.

NAME

ADDRESS

DATE

~~Silverdale~~
July

Strindberg Ford Motor Co Oct 7 1975

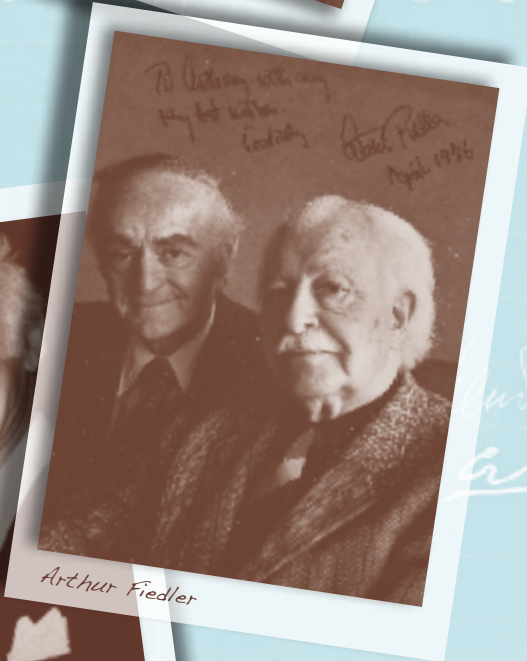
Andre Kostelanetz
Morris Puthoff

Driver of
Lillian
Robert M. Lee
Hubert
Ambassador of
D. L.

John Redgrave
John Dexter
Michael Crawford
P. Schaffer
John Redgrave
John Dexter
Michael Crawford
P. Schaffer
John Redgrave
John Dexter
Michael Crawford
P. Schaffer



Jimmy Durante



Arthur Fiedler



Garson Kanin and Ruth Gordon



Red Auerbach and John Harlicek

BARNES - LONDON

Barnes London

Kenington London
A/C

1-12-6



Seafood delicacies from Anthony's Pier 4 being rushed to President and Mrs. Johnson at the White House for their 30th Wedding Anniversary.

HALF BOTTLES

CHAMPAGNE

21	Louis Roederer, "Brut Premier", France	40. <i>half</i>
6	Veuve Clicquot, "Brut-Yellow", France	50. <i>half</i>
17	Krug, "Grande Cuvee", France	165. <i>half</i>

WHITE

372	Sauvignon Blanc, Matanzas Creek Winery, "Sonoma", California, 2010	22. <i>half</i>
135	Sauvignon Blanc, Merry Edwards, California, 2010	35. <i>half</i>
137	Fume Blanc, Grgich Hills Cellar, "Napa Valley", California, 2009	35. <i>half</i>
451	Chardonnay, Steele Wines, "California", California, 2009	22. <i>half</i>
110	Chardonnay, Patz & Hall Wine Co., "Dutton Ranch", California, 2009	34. <i>half</i>
112	Chardonnay, Ramey Wine Cellars, "Russian River", California, 2009	34. <i>half</i>
322	Chardonnay, Grgich Hills Cellar, "Napa Valley", California, 2008-09	46. <i>half</i>
142	Chardonnay, Matanzas Creek Winery, "Sonoma", California, 2007-08	29. <i>half</i>
357	Chardonnay, Sonoma-Cutrer Vineyards, "R.R.R.", California, 2010	23. <i>half</i>
292	Pouilly Fuisse, Louis Jadot, France, 2010	23. <i>half</i>
238	Sancerre, "Cuvee Bonnes Bouches", Domaine Henri de Bourgeois, France, 2010	23. <i>half</i>

RED

163	Cabernet Sauvignon, "Rutherford", California, 2008 Beaulieu Vineyard	28. <i>half</i>
950	Cabernet Sauvignon, "Artemis", California, 2008 Stag's Leap Wine Cellars	40. <i>half</i>
923	Cabernet Sauvignon, "Estate", "Napa Valley", California, 1997 Chateau Montelena	100. <i>half</i>
279	Bordeaux, Chateau La Mission Haut Brion, "Graves", France, 1966	225. <i>half</i>
931	Ornellaia, Tenuta dell'Ornellaia, Italy, 2002	210. <i>half</i>
687	Pinot Noir, Hirsch, "San Andreas Fault", 2009	47. <i>half</i>

HALF BOTTLES

SWEETS

484	Chateau d'Yquem, Sauternes, France, 1988	350. <i>half</i>
486	Chateau d'Yquem, Sauternes, France, 1980	350. <i>half</i>
488	Chateau d'Yquem, Sauternes, France, 1979	365. <i>half</i>
418	Chateau Climens, Barsac, France, 1988	65. <i>half</i>
283	White Bordeaux, Chateau Giraud, Sauternes, France, 1988	50. <i>half</i>
360	Quarts de Chaume, Domaine des Baumard, France, 1997	50. <i>half</i>
222	Serriger Herrenberg, Riesling Spitzenweine, 1983 "Eiswein", Bert Simon, Germany	75. <i>half</i>
256	Avelsbacher Hammerstein, Riesling Eiswein, 1983 Staats Domaine, Germany	55. <i>half</i>
414	Quady, Essensia, Orange Muscat, California, 2007	25. <i>half</i>
628	Dolce Winery, Late Harvest, Dolce, "Napa", California, 2006-07	110. <i>half</i>
660	Dolce Winery, Late Harvest, Dolce, "Napa", California, 1996	140. <i>half</i>
641	De Bortoli Wines, Sauternes / Noble One, Australia, 1982	75. <i>half</i>
415	Inniskillin, Riesling Iceweine, Canada, 2006	110. <i>half</i>
417	Kracher, Grande Cuvee, Austria, 1998	110. <i>half</i>
432	Royal Tokaji Wine Company, "Aszu", "1er Cru, St. Tamas, 6 Puttonyos", Hungary, 1995	250. 500ML
375	Royal Tokaji Wine Company, "Essencia", Hungary, 1999	600. 500ML
389	Royal Tokaji Wine Company, "Essencia", Hungary, 1993	600. 500ML

VINTAGE PORTS

667	Fonseca, 1992	140. <i>half</i>
668	Graham, 1977	130. <i>half</i>
699	Dow, 1994	85. <i>half</i>

LARGE FORMATS

CHAMPAGNE

MAGNUM

909	Bollinger, "Grande Annee", 1989	450. mag.
906	Moet et Chandon, Dom Perignon, 1990	900. mag.
908	Perrier Jouet, "Fleur de Champagne", 1990	500. mag.

DOUBLE MAGNUM

910	Krug, "Grande Cuvee"	2,500. d. mag.
-----	----------------------	----------------

WHITE BURGUNDY

MAGNUM

905	Pouilly Fuisse, "Cuvee Hors Classe", "Les Menetrieres", 1996 Domaine J. A. Ferret	125. mag.
-----	--	-----------

SAUTERNES

MAGNUM

352	Chateau d'Yquem, 1976	3,000. mag.
-----	-----------------------	-------------

LARGE FORMATS

CALIFORNIA

MAGNUM

385	Beaulieu Vineyard, Cabernet Sauvignon, 1978 "Georges de Latour", Private Reserve	300. mag.
379	Beringer Vineyards, Cabernet Sauvignon, "Private Reserve, Napa", 1991	400. mag.
412	Beringer Vineyards, Merlot, "Bancroft Ranch-Howell Mountain", 1991	225. mag.
380	Caymus Vineyards, Cabernet Sauvignon, "Napa Valley", 1991	275. mag.
179	Caymus Vineyards, Cabernet Sauvignon, "Special Selection", "Napa Valley", 1992	550. mag.
387	Diamond Creek, Cabernet Sauvignon, Napa Valley, 1975 "Gravelly Meadow"	550. mag.
709	"Dominus", Cabernet Sauvignon, John Daniel Society, "Napa Valley", 1994	475. mag.
434	Duckhorn Vineyards, Napa Valley, Merlot, "Three Palms Vineyard", 1994	550. mag.
386	Merryvale, Cabernet Sauvignon, Napa Valley, "Reserve", 1999	175. mag.
381	Robert Mondavi Winery, Cabernet Sauvignon, "Reserve", 1978	450. mag.
382	Robert Mondavi Winery, Cabernet Sauvignon, "Reserve", 1974	650. mag.
384	"Opus One", "Oakville District", Mondavi / Rothschild, 1995	600. mag.
433	Sonoma-Cutrer Vineyards, Founders Reserve, "R.R.R.", 1982	500. 3 liter

DOUBLE MAGNUM

595	"Insignia", Joseph Phelps Vineyards, "Napa Valley", 1994	1,500. d. mag.
410	"Dominus", Cabernet Sauvignon, John Daniel Society, "Napa Valley", 1994	800. d. mag.

LARGE FORMATS

RED BORDEAUX

MAGNUM

911	Chateau Lafite Rothschild, Pauillac, 1976	3,500. mag.
388	Chateau Les Ormes de Pez, St. Estephe, 1971	150. mag.
392	Chateau Pichon Lalande, Pauillac, 1970	600. mag.
393	Chateau Beychevelle, St. Julien, 1966	555. mag.
397	Chateau Montrose, St. Estephe, 1970	650. mag.
398	Chateau Montrose, St. Estephe, 1967	450. mag.
399	Chateau Palmer, Margaux, 1976	450. mag.
346	Chateau Leoville Las Cases, St. Julien, 1978	550. mag.
347	Chateau Leoville Las Cases, St. Julien, 1975	500. mag.
350	Chateau Latour, Pauillac, 1964	1,200. mag.

DOUBLE MAGNUM

300	Chateau Pichon Lalande, Pauillac, 1978	1,200. d. mag.
338	Chateau Palmer, Margaux, 1976	750. d. mag.

IMPERIAL

298	Chateau Palmer, Margaux, 1976	1,100. imp.
-----	-------------------------------	-------------

JEREBOAM

299	Chateau Pichon Lalande, Pauillac, 1978	2,000. jer.
-----	--	-------------

LARGE FORMATS

BURGUNDY

MAGNUM

340	Volnay, 1er Cru, "Clos de la Bousse d'Or", 1972 Domaine de la Pousse d'Or	450. <i>mag.</i>
-----	--	------------------

RHONE

MAGNUM

353	Crozes Hermitage, Domaine Paul Jaboulet Aine, 1995	125. <i>mag.</i>
356	Hermitage, "La Chapelle", Domaine Paul Jaboulet Aine, 1983	425. <i>mag.</i>
408	Chateauneuf du Pape, "Hommage a Jacques Perrin", 1990 Chateau de Beaucastel	2,500. <i>mag.</i>

ITALY

MAGNUM

898	Sassicaia, 1990 Marchesi Incisa Della Rocchetta	1,000. <i>mag.</i>
-----	--	--------------------

NAME

ADDRESS

DATE

Virginia Graham

Here Goes What Her

Joseph W. Barr

Under San Francisco

James Cahill

248 - 173

Police Comm SAN FRANCISCO

Sam Goff

Charles H. Heidrick

Reins

Frances Dee McRae

Joe DiMaggio

Robert Mondavi

Julia Child

Burl Ives

Alfred Hitchcock

Ernest Borgnine

Alfred Hitchcock

Alfred Hitchcock

Alfred Hitchcock

Alfred Hitchcock

Alfred Hitchcock

Alfred Hitchcock

Alfred Hitchcock

Alfred Hitchcock

Alfred Hitchcock

Alfred Hitchcock

Alfred Hitchcock

Alfred Hitchcock

Alfred Hitchcock

Alfred Hitchcock

Alfred Hitchcock

Alfred Hitchcock

Alfred Hitchcock



Joe DiMaggio and Anthony Athanas Jr.



Julia Child and Robert Mondavi



Burl Ives



Alfred Hitchcock

Ernest Borgnine

Beverly Hills Calif.

This is Z

Alfred Hitchcock

Boston Mass

of fine

Alfred Hitchcock

Boston Mass

of fine

Alfred Hitchcock

NYC

of fine

Alfred Hitchcock

Los Angeles

PORTUGAL



Anthony with his brother Lewis, sister Anne, and staff circa 1946



SWEETS

FRANCE

Bordeaux-Sauternes

478	Chateau Giraud, 1988	90.
400	Chateau Giraud, 1983	110.
418	Chateau Climens, Barsac, 1988	65. <i>half</i>
403	Chateau Rieussec, 1986	90.
481	Chateau Coutet, 1986	110.
482	Chateau Lafaurie Peyraguey, 1988	95.
60	Chateau de Fargues, 1980	140.
63	Chateau de Fargues, 1976	200.
67	Chateau de Fargues, 1975	200.
484	Chateau d'Yquem, 1988	350. <i>half</i>
486	Chateau d'Yquem, 1980	350. <i>half</i>
488	Chateau d'Yquem, 1979	365. <i>half</i>
352	Chateau d'Yquem, 1976	3,000. <i>mag.</i>

Loire

360	Quarts de Chaume, Domaine des Baumard, 1997	50. <i>half</i>
-----	---	-----------------

HUNGARY

Tokaji Aszu

432	Royal Tokaji Wine Company, "1er Cru, St. Tamas, 6 Puttonyos", 1995	250. <i>500ML</i>
-----	--	-------------------

Aszu Essencia

375	Royal Tokaji Wine Company, 1999	600. <i>500ML</i>
389	Royal Tokaji Wine Company, 1993	600. <i>500ML</i>

G E R M A N Y

Riesling Spitzenweine

222	Serriger Herrenberg, "Eiswein", 1983 Bert Simon	75. <i>half</i>
256	Avelsbacher Hammerstein, Riesling Eiswein, 1983 Staats Domaine	55. <i>half</i>

C A L I F O R N I A

419	Quady, Essensia, Orange Muscat, 2003	40.
414	Quady, Essensia, Orange Muscat, 2007	25. <i>half</i>

Late Harvest Wine

628	Dolce Winery, Dolce, "Napa", 2006-07	110. <i>half</i>
660	Dolce Winery, Dolce, "Napa", 1996	140. <i>half</i>

C A N A D A

415	Inniskillin, Riesling Iceweine, 2006	110. <i>half</i>
-----	--------------------------------------	------------------

A U S T R A L I A

641	De Bortoli Wines, Sauternes / Noble One, 1982	75. <i>half</i>
-----	---	-----------------

A U S T R I A

417	Kracher, Grande Cuvee, 1998	110. <i>half</i>
-----	-----------------------------	------------------

VINTAGE PORTS

Fonseca

605	1992	250.
667	1992	140. <i>half</i>
625	1985	250.
600	1977	225.
601	1975	125.
602	1970	225.

Taylor Flagate

677	1994	275.
675	1983	200.
606	1977	250.
607	1970	250.
608	1963	400.
609	1955	500.

Graham

610	1977	225.
668	1977	130. <i>half</i>
611	1975	125.
612	1970	170.

Croft

613	1977	175.
614	1970	150.
615	1963	200.

Dow

616	1994	150.
699	1994	85. <i>half</i>

Warre

617	1977	200.
-----	------	------

Quinta do Noval

618	"Nacional", 1970	800.
620	"Nacional", 1962	800.
629	1931	2,500.

NAME

ADDRESS

DATE



Judy Garland



Danny DeVito



Liza Minnelli



Jack Nicholson and Michael Athanas



ENGLISH CHANNEL

BELGIUM

LUXEMBOURG

GERMANY

ALSACE

Wines of the JURA

SWITZERLAND

ITALY

Geneva

SEYSEL

BEAUJOLAIS

HERMITAGE

CLAIRETTE DE DIE

PROVENCE

PALETTE

CASSIS

BANDON

MARSEILLE

PRODIGE

BLANQUETTE DE LIMOUX

ROUSSILLON

BANYULS

GAILLAC

Toulouse

JURANCON

ARMAGNAC

BEAUX

HERMITAGE

CLAIRETTE DE DIE

PROVENCE

PALETTE

CASSIS

BANDON

MARSEILLE

PRODIGE

BLANQUETTE DE LIMOUX

ROUSSILLON

BANYULS

GAILLAC

Toulouse

JURANCON

ARMAGNAC

BEAUX

HERMITAGE

CLAIRETTE DE DIE

PROVENCE

PALETTE

CASSIS

BANDON

MARSEILLE

PRODIGE

BLANQUETTE DE LIMOUX

ROUSSILLON

BANYULS

GAILLAC

Toulouse

JURANCON

ARMAGNAC

BEAUX

HERMITAGE

CLAIRETTE DE DIE

PROVENCE

PALETTE

CASSIS

BANDON

MARSEILLE

PRODIGE

BLANQUETTE DE LIMOUX

ROUSSILLON

BANYULS

GAILLAC

Toulouse

JURANCON

ARMAGNAC

BEAUX

HERMITAGE

CLAIRETTE DE DIE

PROVENCE

PALETTE

CASSIS

BANDON

MARSEILLE

PRODIGE

BLANQUETTE DE LIMOUX

ROUSSILLON

BANYULS

GAILLAC

Toulouse

JURANCON

ARMAGNAC

BEAUX

HERMITAGE

CLAIRETTE DE DIE

PROVENCE

PALETTE

CASSIS

BANDON

MARSEILLE

PRODIGE

BLANQUETTE DE LIMOUX

ROUSSILLON

BANYULS

GAILLAC

Toulouse

JURANCON

ARMAGNAC

BEAUX

HERMITAGE

CLAIRETTE DE DIE

PROVENCE

PALETTE

CASSIS

BANDON

MARSEILLE

PRODIGE

BLANQUETTE DE LIMOUX

ROUSSILLON

BANYULS

GAILLAC

Toulouse

JURANCON

ARMAGNAC

BEAUX

HERMITAGE

CLAIRETTE DE DIE

PROVENCE

PALETTE

CASSIS

BANDON

MARSEILLE

PRODIGE

BLANQUETTE DE LIMOUX

ROUSSILLON

BANYULS

GAILLAC

Toulouse

JURANCON

ARMAGNAC

BEAUX

HERMITAGE

CLAIRETTE DE DIE

PROVENCE

PALETTE

CASSIS

BANDON

MARSEILLE

PRODIGE

BLANQUETTE DE LIMOUX

ROUSSILLON

BANYULS

GAILLAC

Toulouse

JURANCON

ARMAGNAC

BEAUX

HERMITAGE

CLAIRETTE DE DIE

PROVENCE

PALETTE

CASSIS

BANDON

MARSEILLE

PRODIGE

BLANQUETTE DE LIMOUX

ROUSSILLON

BANYULS

GAILLAC

Toulouse

JURANCON

ARMAGNAC

BEAUX

HERMITAGE

CLAIRETTE DE DIE

PROVENCE

PALETTE

CASSIS

BANDON

MARSEILLE

PRODIGE

BLANQUETTE DE LIMOUX

ROUSSILLON

BANYULS

GAILLAC

Toulouse

JURANCON

ARMAGNAC

BEAUX

HERMITAGE

CLAIRETTE DE DIE

PROVENCE

PALETTE

CASSIS

BANDON

MARSEILLE

PRODIGE

BLANQUETTE DE LIMOUX

ROUSSILLON

BANYULS

GAILLAC

Toulouse

JURANCON

ARMAGNAC

BEAUX

HERMITAGE

CLAIRETTE DE DIE

PROVENCE

PALETTE

CASSIS

BANDON

MARSEILLE

PRODIGE

BLANQUETTE DE LIMOUX

ROUSSILLON

BANYULS

GAILLAC

Toulouse

JURANCON

ARMAGNAC

BEAUX

HERMITAGE

CLAIRETTE DE DIE

PROVENCE

PALETTE

CASSIS

BANDON

MARSEILLE

PRODIGE

BLANQUETTE DE LIMOUX

ROUSSILLON

BANYULS

GAILLAC

Toulouse

JURANCON

ARMAGNAC

BEAUX

HERMITAGE

CLAIRETTE DE DIE

PROVENCE

PALETTE

CASSIS

BANDON

MARSEILLE

PRODIGE

BLANQUETTE DE LIMOUX

ROUSSILLON

BANYULS

GAILLAC

Toulouse

JURANCON

ARMAGNAC

BEAUX

HERMITAGE

CLAIRETTE DE DIE

PROVENCE

PALETTE

CASSIS

BANDON

MARSEILLE

PRODIGE

BLANQUETTE DE LIMOUX

ROUSSILLON

BANYULS

GAILLAC

Toulouse

JURANCON

ARMAGNAC

BEAUX

HERMITAGE

CLAIRETTE DE DIE

PROVENCE

PALETTE

CASSIS

BANDON

MARSEILLE

PRODIGE

BLANQUETTE DE LIMOUX

ROUSSILLON

BANYULS

GAILLAC

Toulouse

JURANCON

ARMAGNAC

BEAUX

HERMITAGE

CLAIRETTE DE DIE

PROVENCE

PALETTE

CASSIS

BANDON

MARSEILLE

PRODIGE

BLANQUETTE DE LIMOUX

ROUSSILLON

BANYULS

GAILLAC

Toulouse

JURANCON

ARMAGNAC

BEAUX

HERMITAGE

CLAIRETTE DE DIE

PROVENCE

PALETTE

CASSIS

BANDON

MARSEILLE

PRODIGE

BLANQUETTE DE LIMOUX

ROUSSILLON

BANYULS

GAILLAC

Toulouse

JURANCON

ARMAGNAC

BEAUX

HERMITAGE

CLAIRETTE DE DIE

PROVENCE

PALETTE

AFTER DINNER DRINKS

Cognac	glass
Fine Champagne, "Prestige" J. Normandin Mercier	15.
Grande Fine Champagne, "Vesper" Delamain	25.
Fine Champagne, "X.O. Excellence" Remy Martin	30.
Grande Fine Champagne, "Abel" Pierre Ferrand	40.
Grande Champagne, "Triomphe" Hine	40.
Grande Champagne, "Paradis" Hennessy	75.
Grande Champagne, "Louis XIII" Remy Martin	175.
Grande Champagne, "Reserve de la Famille" "Rare Unblended" Delamain	60.
Cognac, "Reserve" Lafite Rothschild Selection	85.

Armagnac	glass
Armagnac, "XO" Larressingle	18.
Bas Armagnac, "Reserve '70", Domaine Boigneres, Leon Lafitte, Prop.	35.
Bas Armagnac, "Reserve '66", Domaine Boigneres, Leon Lafitte, Prop.	40.

AFTER DINNER DRINKS

Eaux De Vie and Liqueurs	glass
Eau de Vie de Poire William Pear Brandy	9.
Eau de Vie de Framboise Raspberry Brandy	9.
Eau de Vie de Marc, "Corton Grancey" Domaine Louis Latour	12.
Fine Bourgogne, "1979" Domaine de la Romanee Conti	75.
Calvados du Pays d'Auge, "Hors d'Age", 15 yrs Morin	10.
Chartreuse, "V.E.P.", "Vieillessement Exceptionnellement Prolonge" L. Garnier	25.
Grande Marnier, "Cuvee du Centenaire" Marnier Lapostolle	30.
Grande Marnier, "Cuvee Cent Cinquantaire" Marnier Lapostolle	40.

Grappa	glass
Merlot, Jacopo Poli	25.
Merlot, Ornellaia	25.
Cabernet, Sassicaia	25.
Luce delle Vite	25.
Pinot, Jacopo Poli	25.

NAME

ADDRESS

DATE

Lee & Alice

It's superb 3rd deserving of
gratitude — Ever. d.b.

Wally Schmitt

A delightful ll experience! (↑)~~Al~~ He was very
surprised

Gary Collins

Lee & Alice

Phil White

Dick Van Patten

Domenica Bisenti de Cap
Martinez, Cardenas, Mon
Bella known as Valeria
Hillier, Joanne

John White

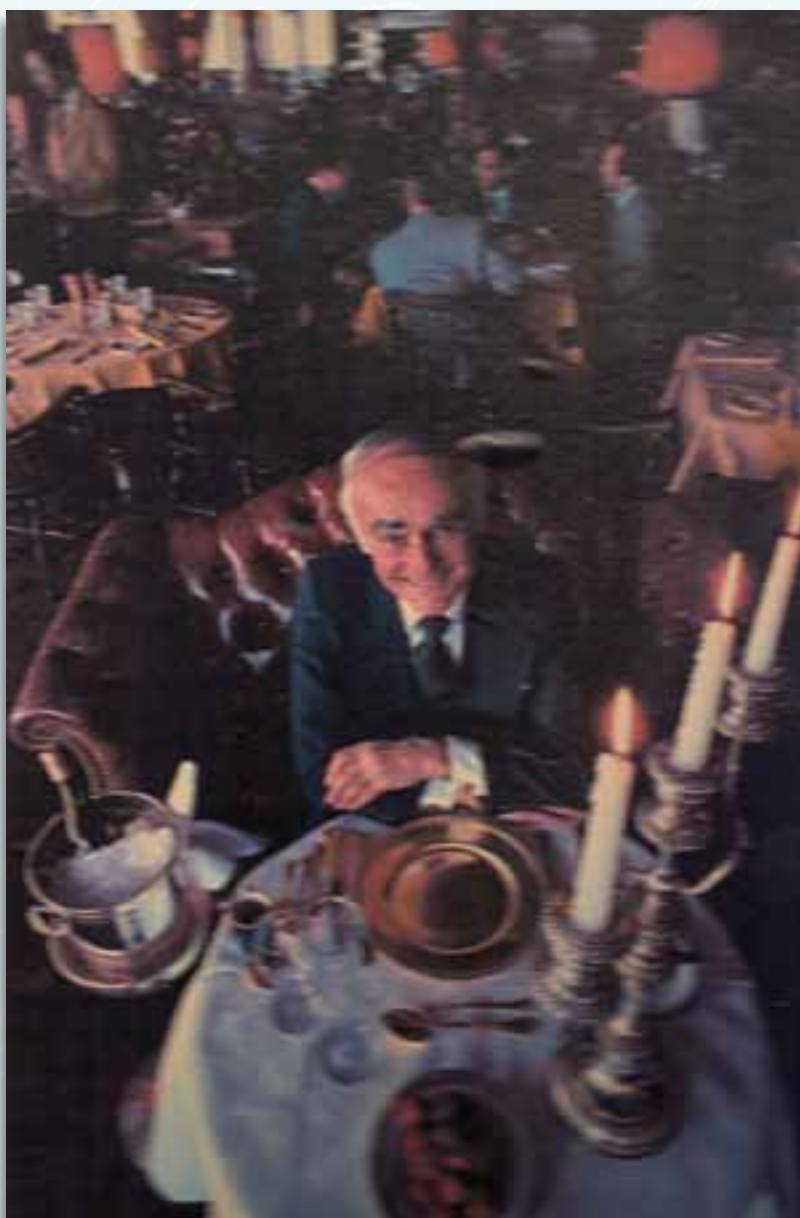
~~Wally Schmitt~~

Mike Douglas

Shewart Soupe

Jane Strauss

Otter Meenan

~~Wally Schmitt~~

Eagle Point, Oregon —

7-8-72

Zenwa.

Gracia St 3/9/74



ITALIAN WINES

1. Barbaresco
2. Barbera
3. Barolo
4. Cortesi de Garve
5. Catlinara
6. Moscato d'Asti e Moscato d'Asti Spumante o Asti
7. Franciacorta
8. Lugana
9. Valtellina e Valtelline Superiori, Grumello, Inferno, Sessella
10. Bardolino
11. Bianco di Custoza
12. Colli Euganei
13. Soave
14. Valpolicella, Amerone
15. Alto Adige, Cabernet, Merlot, Pinot Grigio
16. Pinot Bianco
17. Trentino
18. Collio Goriziano, Cabernet Franc

34. Colli Albani
35. Esti, Esti, Esti di Montefiascone
36. Marino
37. Frascati
38. Taurasi
39. Fiano
40. Greco
41. Ciro
42. Verdicchio dei Castelli di Jesi
43. Montepulciano di Abruzzo
44. Castel del Monte
45. Corvo
46. Lina
47. Marsala
48. Moscato di Pantelleria
49. Regaleali

Guestbook signatures from Anthony's Pier 4 1963-1972

Maps courtesy of Sacha Lichine

Alexis Lichine's New Encyclopedia of Wines & Spirits

and Wines of France

Wine-producing area